

BAINBRIDGE AT WELLINGTON GREEN

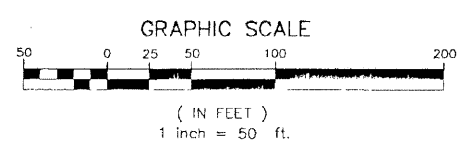
A PLANNED UNIT DEVELOPMENT BEING A PART OF WELLINGTON GREEN MUPD/PUD
 BEING A REPLAT OF A PORTION OF PARCEL 1, "WELLINGTON GREEN, A MUPD/PUD",
 AS RECORDED IN PLAT BOOK 87, PAGES 81 THROUGH 90 OF THE PUBLIC RECORDS OF PALM BEACH
 COUNTY, FLORIDA, LYING IN SECTION 13, TOWNSHIP 44 SOUTH, RANGE 41 EAST, VILLAGE OF WELLINGTON, PALM BEACH COUNTY, FLORIDA

THIS INSTRUMENT PREPARED BY
 DAVID P. LINDLEY
 OF
CAULFIELD and WHEELER, INC.
 SURVEYORS - ENGINEERS - PLANNERS
 7301-A WEST PALMETTO PARK ROAD, SUITE 100A
 BOCA RATON, FLORIDA 33433 - (561)392-1991
 JULY - 2000

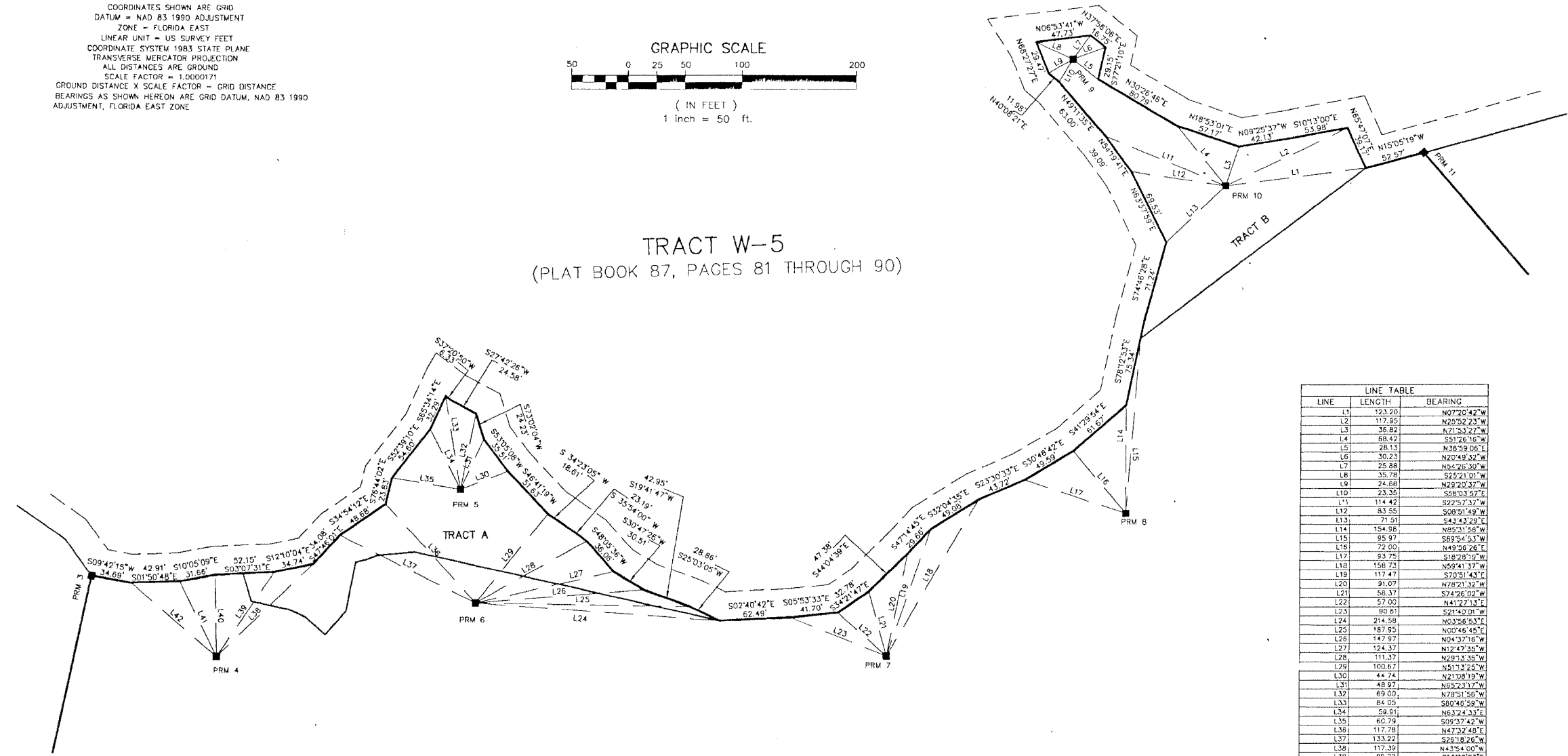
STATE OF FLORIDA
 COUNTY OF PALM BEACH
 THIS PLAT WAS FILED FOR
 RECORD AT _____ M.
 THIS _____ DAY OF _____
 A.D. 2001 AND DULY RECORDED
 IN PLAT BOOK _____ ON
 PAGES _____ AND _____
 DOROTHY H. WILKEN
 CLERK CIRCUIT COURT
 BY: _____
 DEPUTY CLERK

NOTES COORDINATES, BEARINGS AND DISTANCES

COORDINATES SHOWN ARE GRID
 DATUM = NAD 83 1990 ADJUSTMENT
 ZONE = FLORIDA EAST
 LINEAR UNIT = US SURVEY FEET
 COORDINATE SYSTEM 1983 STATE PLANE
 TRANSVERSE MERCATOR PROJECTION
 ALL DISTANCES ARE GROUND
 SCALE FACTOR = 1.0000171
 GROUND DISTANCE X SCALE FACTOR = GRID DISTANCE
 BEARINGS AS SHOWN HEREON ARE GRID DATUM, NAD 83 1990
 ADJUSTMENT, FLORIDA EAST ZONE



TRACT W-5 (PLAT BOOK 87, PAGES 81 THROUGH 90)



LINE	LENGTH	BEARING
L1	123.20	N072°04'27\"
L2	117.95	N25°52'23\"
L3	36.82	N71°53'27\"
L4	88.42	S51°26'15\"
L5	28.13	N38°59'06\"
L6	30.23	N20°49'32\"
L7	25.88	N8°28'30\"
L8	35.78	S23°21'01\"
L9	24.68	N23°20'37\"
L10	23.35	S88°03'57\"
L11	114.42	S22°37'37\"
L12	83.55	S08°51'49\"
L13	71.51	S43°43'29\"
L14	154.96	N85°31'48\"
L15	95.97	S89°54'53\"
L16	72.00	N49°36'26\"
L17	93.75	S18°28'19\"
L18	156.73	N59°41'37\"
L19	117.47	S79°51'43\"
L20	91.07	N78°21'32\"
L21	56.37	S74°26'02\"
L22	57.00	N41°27'13\"
L23	90.81	S21°40'01\"
L24	214.58	N03°36'53\"
L25	187.95	N00°46'45\"
L26	147.97	N04°37'18\"
L27	124.37	N12°47'35\"
L28	111.37	N29°13'35\"
L29	100.67	N51°12'22\"
L30	44.74	N21°08'19\"
L31	48.97	N85°23'17\"
L32	69.00	N78°51'56\"
L33	64.05	S80°46'59\"
L34	59.91	N83°24'31\"
L35	60.79	S09°37'42\"
L36	117.78	N47°32'48\"
L37	133.22	S26°18'28\"
L38	112.39	N135°40'27\"
L39	89.72	S55°19'03\"
L40	71.25	S88°30'00\"
L41	73.34	N63°35'25\"
L42	99.18	S40°25'06\"